

RANGE COMPOSITION

N 900: a range of over 150 models for the professional caterer designed to guarantee the highest level of performance, reliability, energy saving, safety standards and ergonomic operation. These concepts are reflected in the total modularity of the range that ensures innumerable configurations, either free-standing, bridged or cantilever. N900 demonstrates how advanced technology can satisfy the needs of the professional caterer.

The model detailed on this sheet is a chip scuttle that can be easily mounted on refrigerated bases, open base cupboards or bridging supports.



Model 200406 on base

N 900

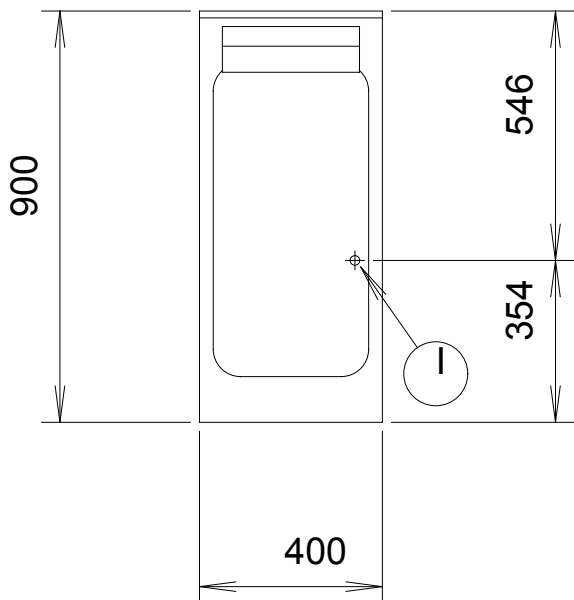
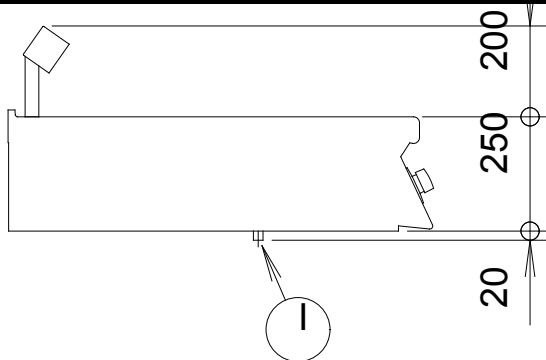
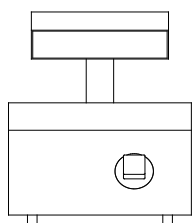
CHIP SCUTTLE ZANUSSI PROFESSIONAL

FUNCTIONAL AND CONSTRUCTION FEATURES

- ◆ One-piece pressed worktop in stainless steel with Scotch Brite finish for easy cleaning.
- ◆ Heating via infrared element positioned on the back of the unit.
- ◆ ON/OFF switch.
- ◆ Well suitable to contain a 1/1 GN container with a maximum height of 150 mm.
- ◆ Supplied as standard with a 1/1 GN perforate false bottom specially shaped to facilitate food collection through a spatula.
- ◆ The special design of the control knob system guarantees against water infiltration
- ◆ Ease of maintenance guaranteed by frontal access to all working components
- ◆ The model can be easily mounted on refrigerated base, open base cupboards, bridging supports or cantilever systems.
- ◆ IPX5 water protection.

- ◆ Main connections can be via the base of the unit.
- ◆ All models provided with service duct to facilitate installation.

TECHNICAL DATA	
CHARACTERISTICS	MODELS
	NCCE400 200406
External dimensions - mm	
width	400
depth	900
height	250
Usable well dimensions - mm	
width	306
depth	510
height	156
Power - kW	
installed-electric	1
Net weight - kg.	28
Supply voltage	230 V, 1N, 50/60



597815500

LEGEND

I - Electrical connection	NCCE400 200406 230 V, 1N, 50/60
---------------------------	---------------------------------------

OPTIONAL ACCESSORIES

ACCESSORIES	MODELS
	NCCE400 200406
2 SIDE COVERING PANELS FOR TOP-D=900MM	206278
FRONTAL HANDRAIL 1200 MM	206191
FRONTAL HANDRAIL 1600 MM	206192
FRONTAL HANDRAIL 400 MM	206166
FRONTAL HANDRAIL 800 MM	206167
JUNCTION SEALING KIT	206086
LARGE HANDRAIL(PORTIONING SHELF)400 MM	206185
LARGE HANDRAIL(PORTIONING SHELF)800 MM	206186
PAIR OF COVERING STRIPS FOR END ELEMENTS	206234
SIDE HANDRAIL-RIGHT/LEFT HAND	206165



www.zanussiprofessional.com